

The Women's Center provides free, confidential, 24-hour, easily accessible services to those in need.

We provide counseling, education, outreach, referrals and resources.

With over 40 years of experience, The Women's Center is the only organization in the region providing services for victims of domestic violence, sexual assault, and child trauma.

The Women's Center provides services to the communities of Acushnet, Dartmouth, Fairhaven, Fall River, Freetown, Marion, Mattapoisett, New Bedford, Rochester, Somerset, Swansea, Wareham, and Westport.

Mission

To empower and support positive choices for all, and to educate and take action in the community for the prevention of oppression and violence.

All services are free and confidential
Multi-lingual services and materials available

Business Line: (508) 996-3343

24-HOUR HOTLINE:
(508) 999-6636
TTY: (888) 887-7130



Empowerment, Education and Support for a Violence-free Community

Did you know . . . ?

- A woman is beaten in America every 15 seconds.
- Domestic Violence accounts for 30% of all homicide victims.
- 31% of American women report being physically or sexually abused by a husband or boyfriend.
- 87% of completed rapes are committed by someone who is known to the victim.
- Men can be victims of abuse.
- One in five high school students reports being physically or sexually abused by a dating partner.

Definition of Sexual Assault:

Sexual assault and rape are crimes of violence and control, using sex acts as a weapon. Rape and sexual assault are not sexually motivated acts; rather, they stem from aggression, rage, sexism, and the determination to exercise power and control over another person.

Definition of Domestic Violence:

Domestic violence is a **pattern** of coercive behavior motivated by power and control in **intimate relationships** whereby the behavior of another person is **controlled** through humiliation, intimidation, fear, and often intentional **physical, emotional** or **sexual** injury.

24-Hour Hotline: (508) 999-6636

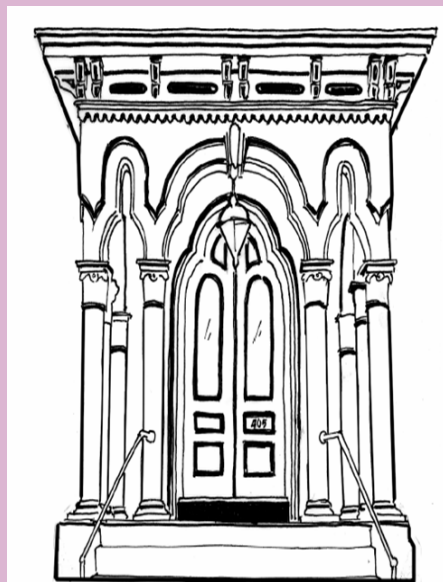
The Women's Center is funded, in part, by the Massachusetts Executive Office of Health and Human Services through the Department of Public Health, the Department of Children & Families (DCF), the Massachusetts Office for Victim Assistance (MOVA), Victims of Crime Act (VOCA), and the Massachusetts Bar Foundation.

A United Way Agency



www.thewomenscentersc.com

The Women's Center



The door to a future free from violence

Serving victims of violence, abuse and trauma since 1973:

- ◆ Domestic Violence Program
- ◆ Sexual Assault Program
- ◆ Child & Adolescent Trauma Program
- ◆ Legal and Medical Advocacy
- ◆ Residential Services
- ◆ Emergency Safe Home
- ◆ Community Education and Outreach

24-Hour Hotline
(508) 999-6636
(888) 839-6636
TTY: (508) 996-1177

www.thewomenscentersc.com

Domestic Violence Program (since 1978), offering a 24-hour hotline, multilingual crisis intervention, individual and group counseling, secure shelters, emergency Safe Homes (1-14 days), legal/medical advocacy, and support with related issues, such as housing, employment, victim compensation and other services.

Sexual Assault Program (since 1983), offering a 24-hour hotline, multilingual crisis intervention, individual and group counseling, legal/medical advocacy and support services.

Child & Adolescent Trauma Program (since 1997), providing comprehensive services to youth who have been traumatized by physical and/or sexual violence, including clinical assessments, diagnosis, and treatment with licensed child therapists.

Prevention Education and Community Outreach, offering education to organizations, schools, and service providers; domestic violence/sexual assault advocate training; and community outreach aimed at increasing awareness and identifying victims.

Legal Advocacy Program

Court advocates assist victims of violence and abuse in their use of the Criminal Justice System. Advocates support and empower these victims to affect positive experiences within the legal system.

- ◆ **SAFEPLAN** is available on site at New Bedford District and Family Probate Courts.
- ◆ Safety Planning
- ◆ Explanation of Abuse Law 209A and the process
- ◆ Moral support and court accompaniment
- ◆ Providing information, crisis intervention and referrals to other needed services

TWC Court Advocates are not attorneys; therefore, they do not provide legal advice or representation .

Multilingual Staff • Direct Services • Materials

The Center is particularly attuned to the needs of underserved populations in our community, including low-moderate income populations, immigrants, refugees and other non-English speaking victims. Direct services, outreach and education materials are multilingual.

Sexual Assault Services From Somerset to Wareham

Sexual Assault services for individuals who are victims of sexual assault are offered throughout our service area.

Services include Sexual Assault counseling, medical advocacy, and referrals.

Crisis and Ongoing Counseling

- ◆ Individual counseling for primary and secondary victims
- ◆ Support groups for teen and adult survivors.

Medical and Legal Advocacy

- ◆ On-site hospital support
- ◆ Safety Planning
- ◆ Court Accompaniment

Counselors are available for Portuguese and Spanish speaking populations.

Specialized Services for:

- ◆ Immigrant and Refugee Sexual Assault survivors
- ◆ Bilingual Spanish and Portuguese Individuals

*For appointments, call The Women's Center
business line at (508) 996-3343*

All services are free and confidential.

Main Office:

405 County Street
New Bedford, MA 02740
(508) 996-3343 Fax: (508) 999-7139

Fall River Office:

209 Bedford Street
Fall River, MA 02720
(508) 672-1222 Fax: (508) 672-2033

www.thewomenscentersc.com

Residential Services

Residential Services include two emergency shelters for adult, child and adolescent victims and one specialized shelter for women who are victims of domestic violence or sexual assault with substance abuse or mental health issues.

Emergency Shelters:

Artemis I (since 1978)

Our Sisters' Place (since 1990)

providing secure emergency shelter and "wrap around" support services for victims of domestic violence and sexual assault and their children.

Specialized Shelter for Women:

Artemis II (since 2007) is a unique program serving women who suffer from domestic violence or sexual assault and in addition experience substance abuse or mental health issues. This structured program is designed to help victims address their particular issues and empower them to move out of shelter into an independent life free from violence and abuse.



HomePort Transitional Housing Program

A transitional housing program that assists singles and families who become homeless as a result of domestic violence and/or sexual assault.

The program's mission is to support and empower families fleeing domestic violence to start a new life. The TWC HomePort program provides a safe and stable environment, encourages healthy relationships, education, employment, financial independence, and ultimately permanent housing.